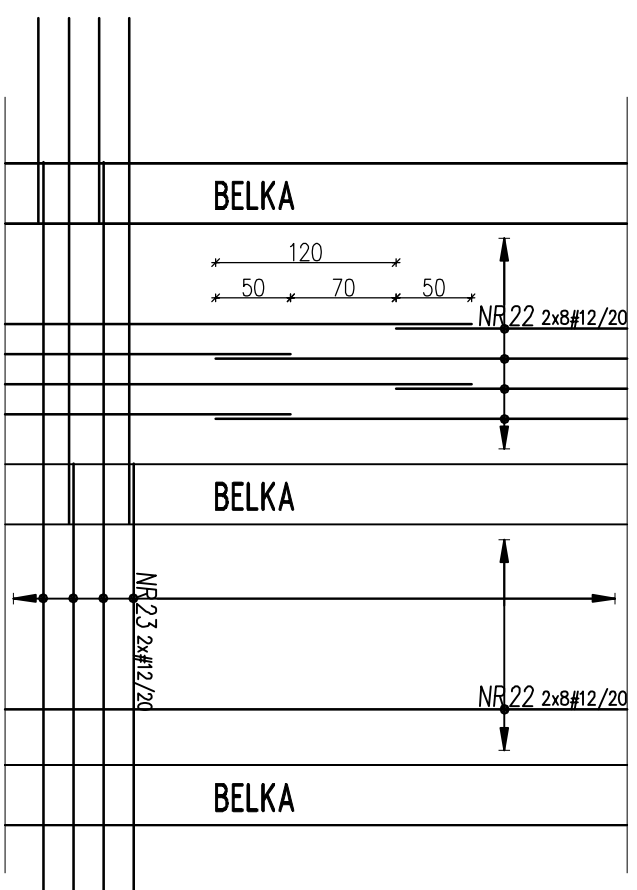
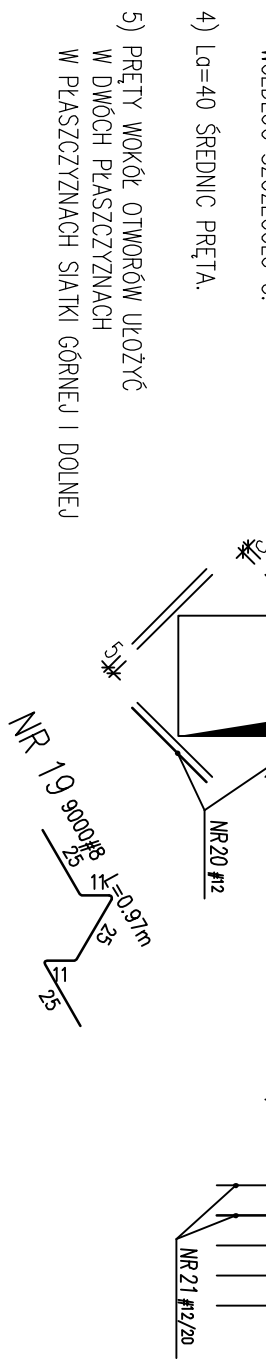
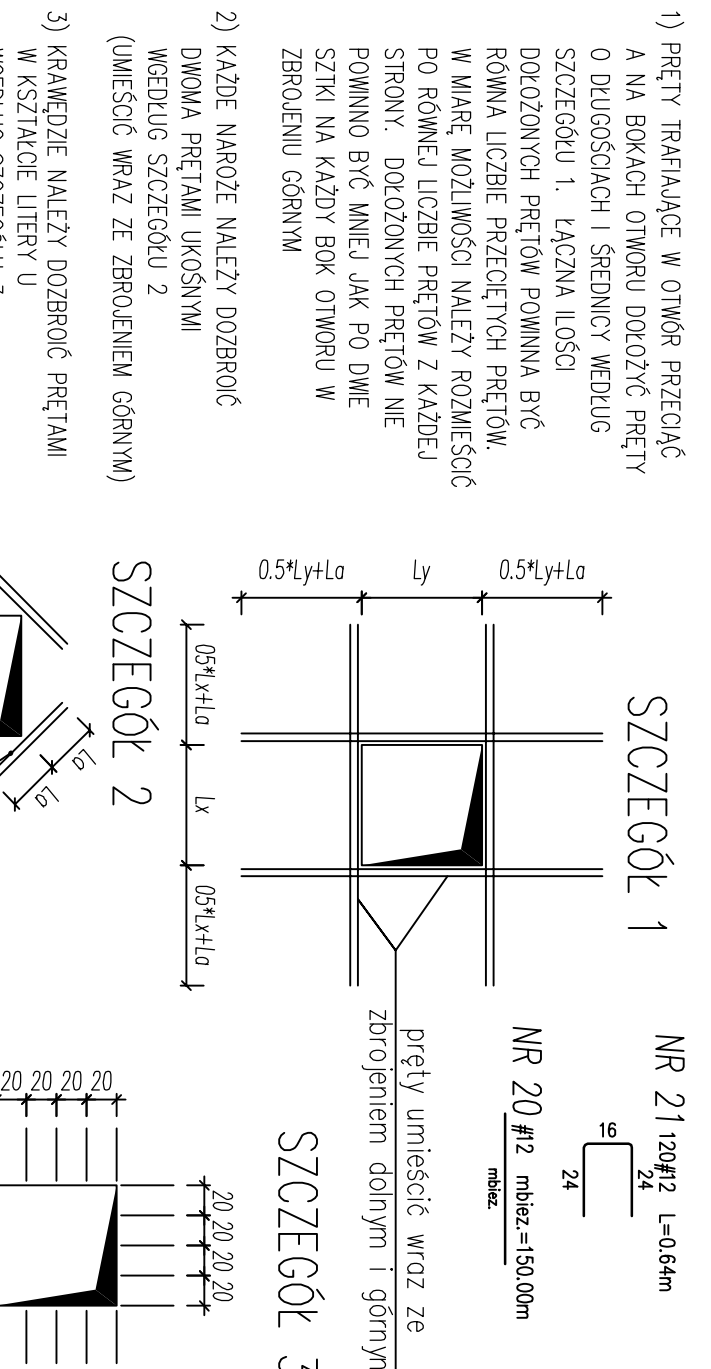


WYTYCZNE ZBROJENIA ŚCIAN

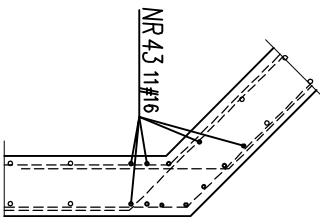
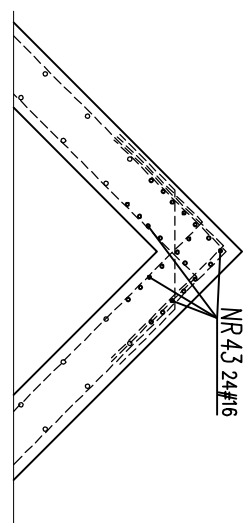
BELKA A11 56x40 szt.2

Belka A3 gr. 50cm



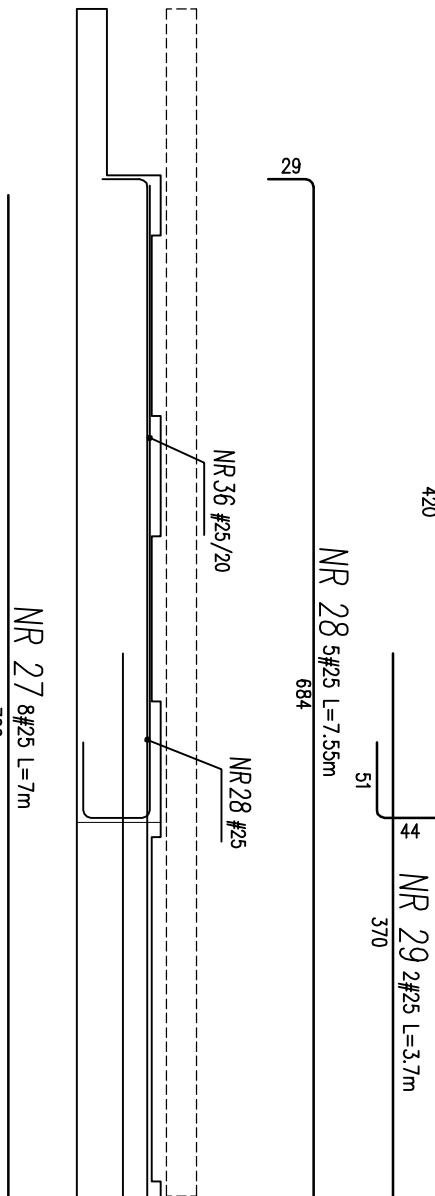
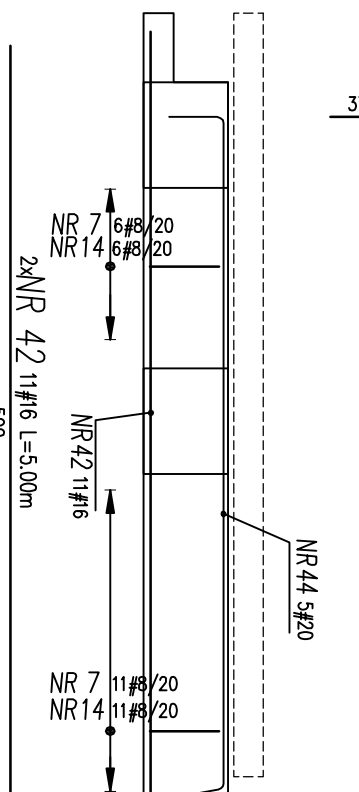
WYTYCZNE ZBROJENIA
KALENICY

WYTYCZNE ZBROJENIA
PORĄCZENIA ŚCIANY – ST

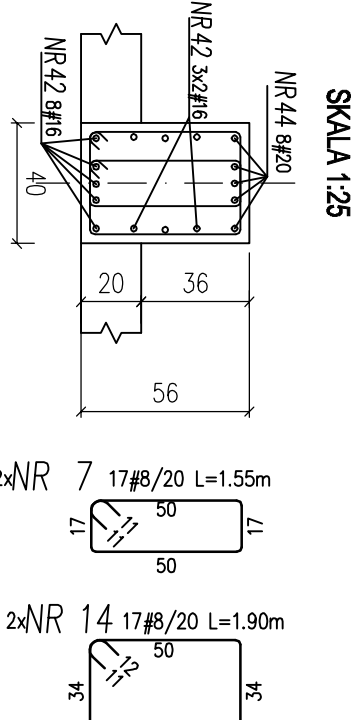


$L = 5.35 \text{ m}$

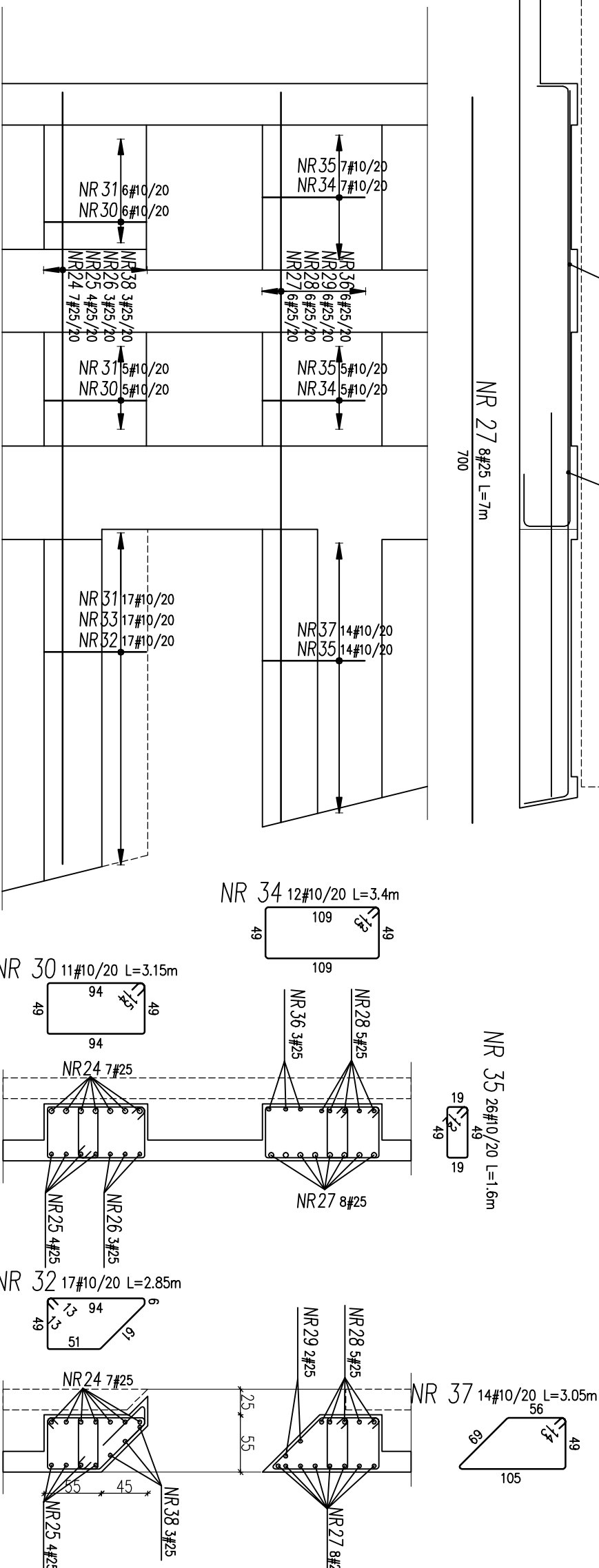
NR 29 2/25 L=3.7m	420	NR 29 2/25 L=3.7m
-------------------	-----	-------------------



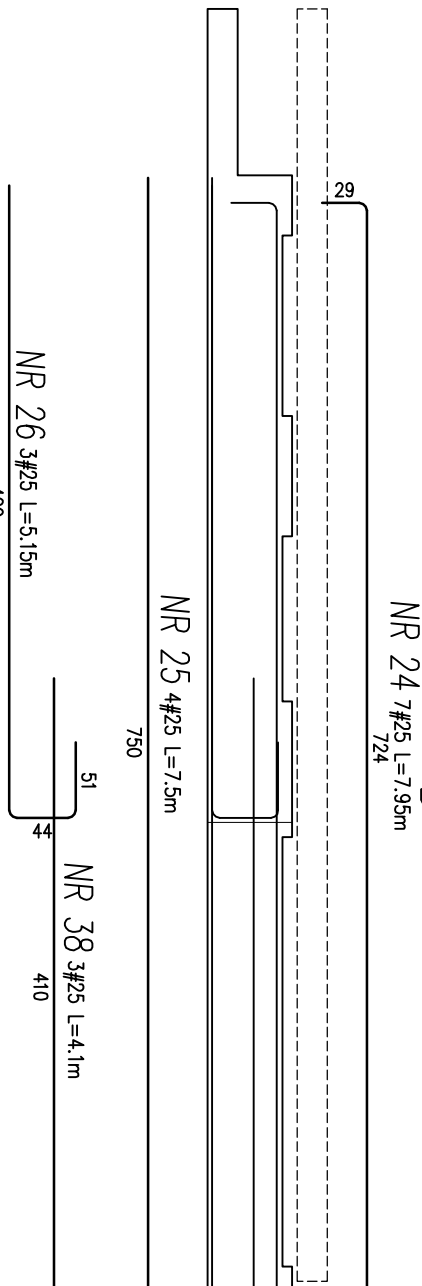
Przekrój 11-11



Belka A3 gr. 50cm

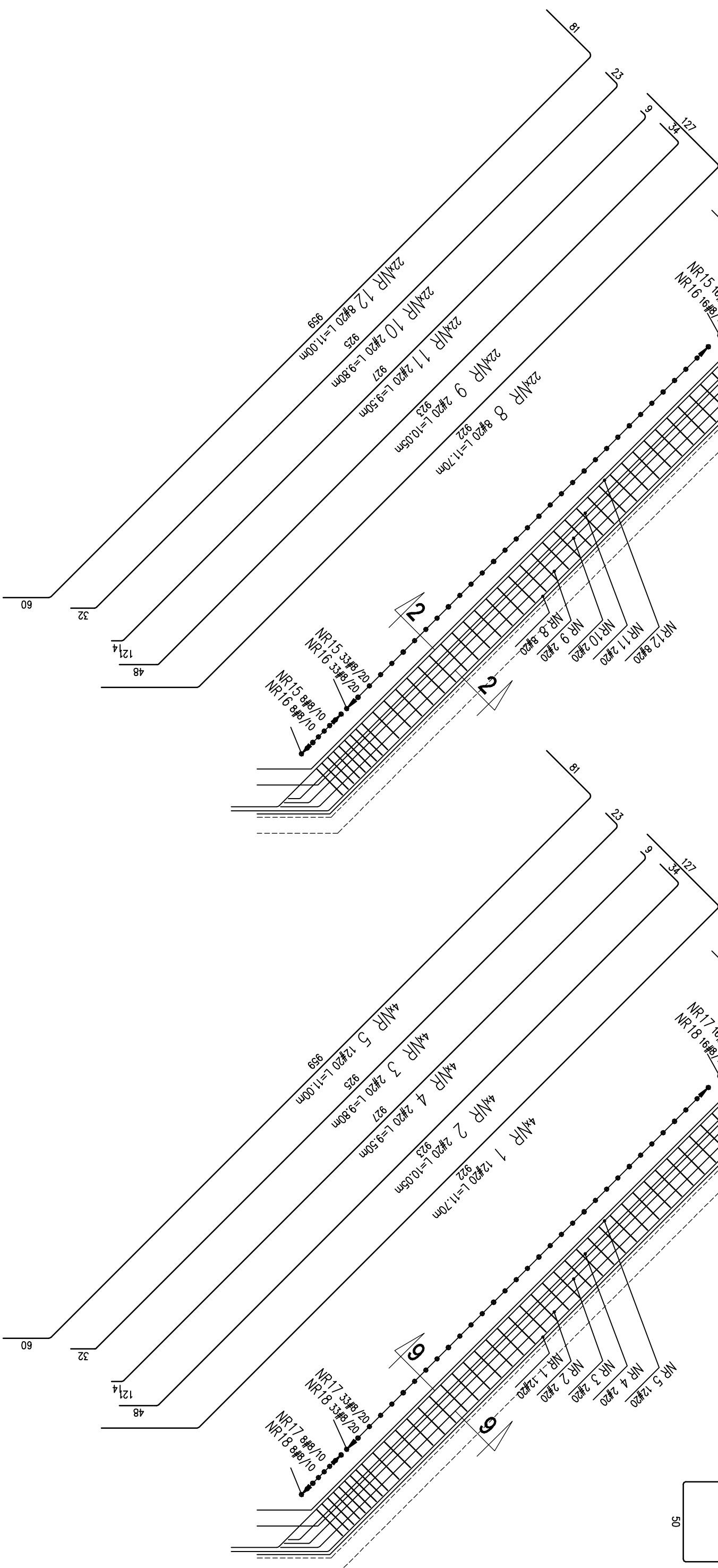
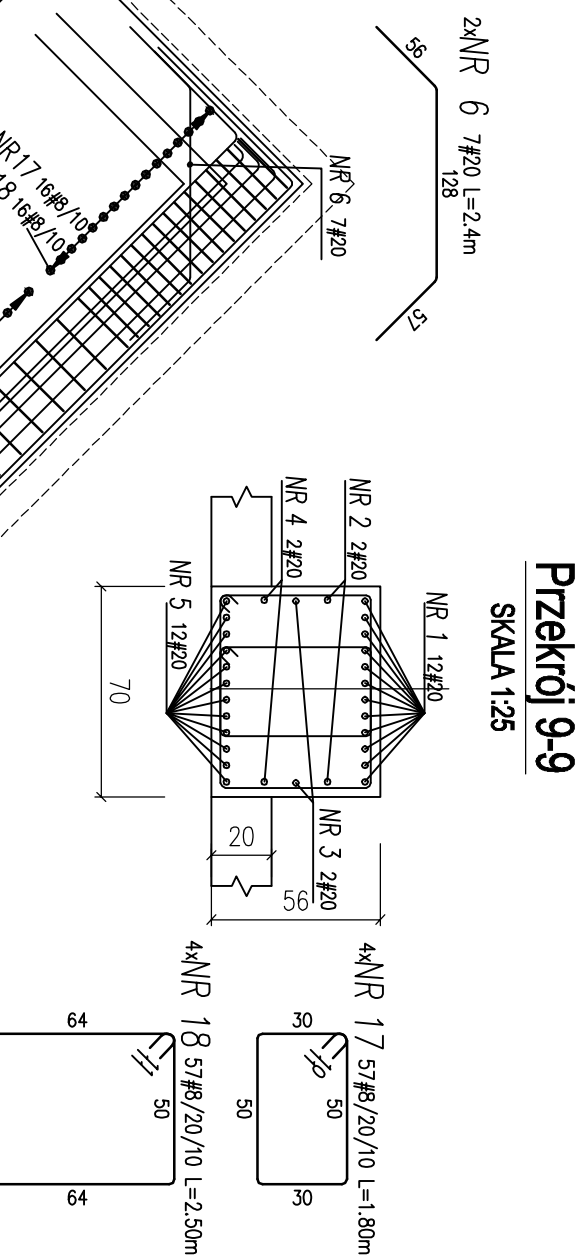
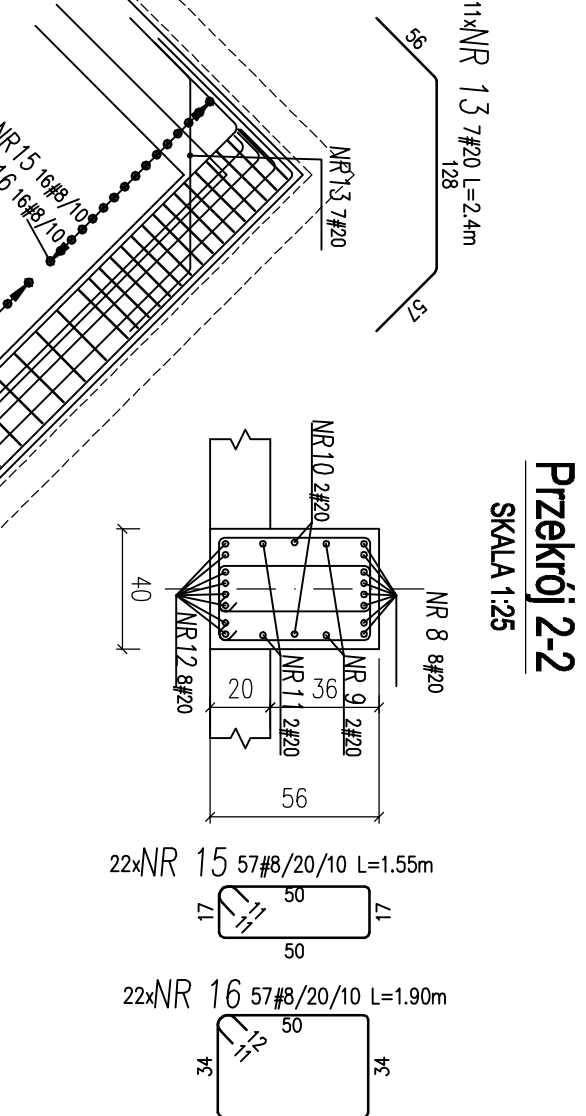


Belka A2 gr. 50cm

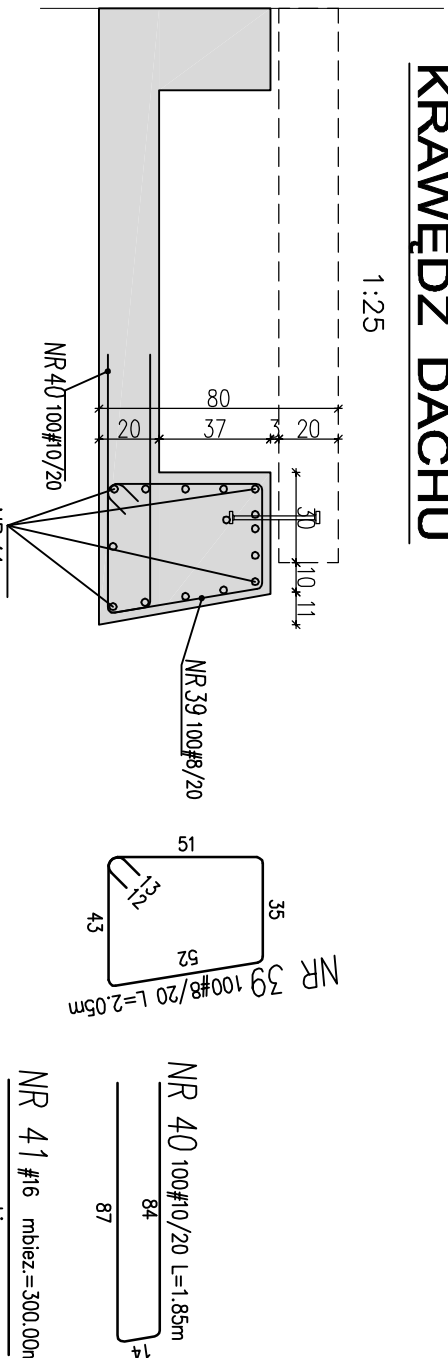
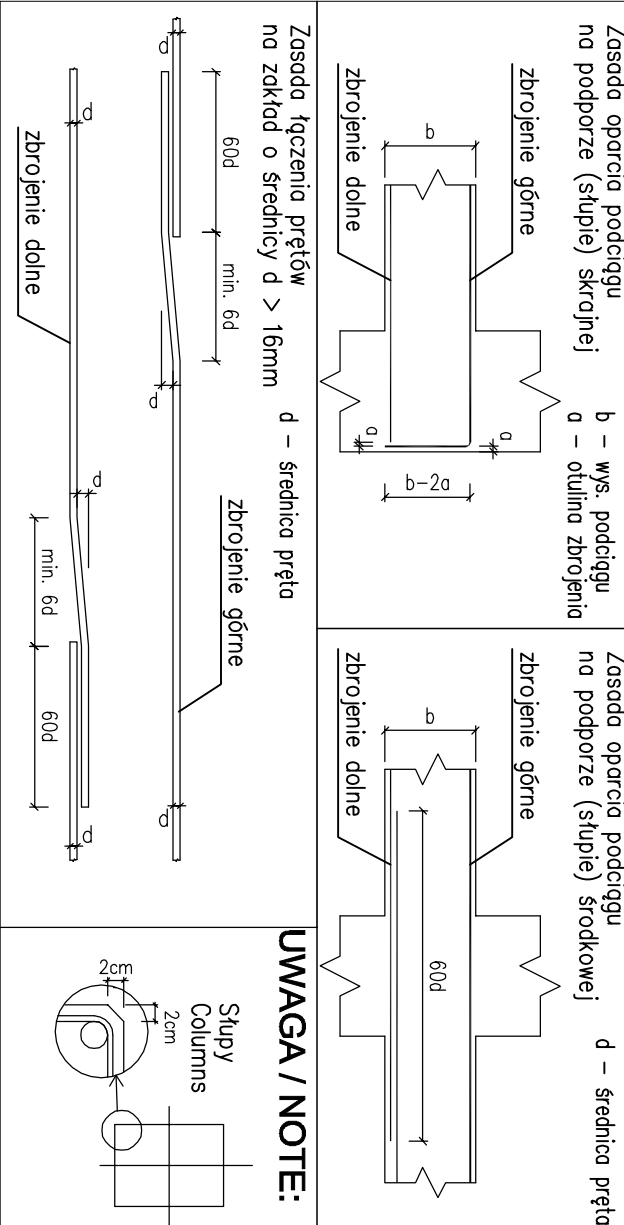


BELKA A5 56x40 22 szt

BELKA A9 56x70 4 szt.



Post.	#	h [mm]	S ₁₂	U ₁₀	8	10	12	16	20	25	U ₁₀ h ₁₀
2	20	8	10.6						561.4	3.85	polir granok
3	20	8	9.80						70.42		polir granok
4	20	8	9.50						70.02		polir granok
5	20	48	11.00						507.86		polir granok
6	20	14	2.40						33.60		polir granok
7	8	36	1.55	52.70					208.50		polir granok
8	20	16	11.70						446.28		polir granok
9	20	44	10.05						43.33		polir granok
10	20	44	9.80						418.13		polir granok
11	20	44	9.50						193.47		polir granok
12	20	176	11.00								polir granok
13	20	37	2.40						16.80		polir granok
14	8	34	1.50								polir granok
15	8	1254	1.55								polir granok
16	8	228	1.80								polir granok
17	8	228	1.80								polir granok
18	8	9000	L = 0.97								polir granok
19	8	9000	L = 0.97	870.00							polir granok
20	12	1	mb=150.00			150.00					mb
21	12	120	L = 0.44			76.80					polir granok
22	12	1	mb=400.00			400.00					mb
23	12	1	mb=450.00			450.00					mb
24	25	7	7.25								mb
25	25	4	7.50						55.66		polir granok
26	25	4	5.15						50.00		polir granok
27	25	8	7.00						15.45		polir granok
28	25	5	7.55						56.00		polir granok
29	25	2	3.10						37.76		polir granok
30	10	11	3.70						7.40		polir granok
31	10	28	1.65			46.14					polir granok
32	10	17	2.65			44.50					polir granok
33	10	17	1.05			17.85					polir granok
34	10	12	3.40			46.80					polir granok
35	10	28	1.60			41.55					polir granok
36	25	3	5.15						15.45		polir granok
37	10	14	3.05			42.68					polir granok
38	25	3	3.05						12.30		polir granok
39	8	100	2.05	204.80							polir granok
40	10	100	1.85			185.00					polir granok
41	16	1	mb=300.00			300.00					mb
42	16	22	5.00			110.00					polir granok
43	16	1	mb=1300.00			1300.00					mb
44	20	10	5.35						53.15		polir granok
			[m]	14.055.36	40.30	878.80	1760.00	668.68	230.01		stano filip.
			[kg]	0.395	0.617	0.888	1.58	2.47	3.85		stano filip.
			[kg]	5671.35	2821.5	7748.40	2780.80	16988.20	885.55		stano filip.
			[kg]			34.636.04					stano filip.



ZASADA ROZMIESZCZENIA TRZPIENI

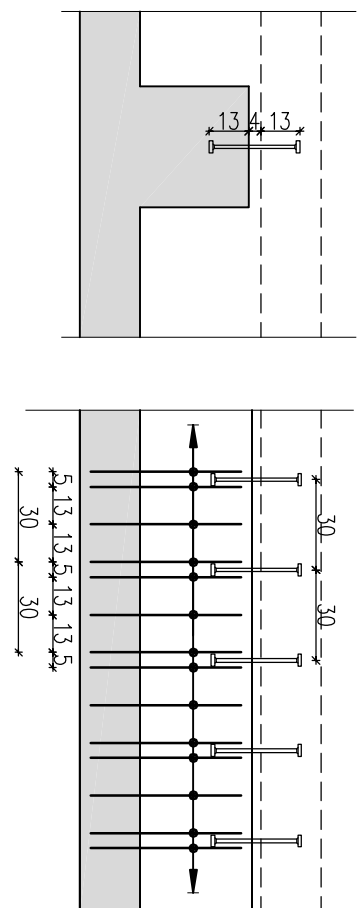


Figure 1 consists of four schematic diagrams labeled (a) through (d), each representing a different type of woven polypropylene (PP) geotextile. The diagrams illustrate the internal structure of the fabric, showing the arrangement of warp and weft threads.

- (a) **Woven PP geotextile**: Shows a plain weave pattern where warp and weft threads interlace in a simple, regular manner.
- (b) **Woven PP geotextile**: Shows a twill weave pattern, characterized by a diagonal ribbed structure.
- (c) **Woven PP geotextile**: Shows a ribbed pattern, where the warp threads are more prominent than the weft threads.
- (d) **Woven PP geotextile**: Shows a diamond pattern, where the warp and weft threads are arranged to form a series of diamond shapes.

Each diagram includes labels for 'warp' and 'weft' threads, indicating the orientation of the fibers within the fabric structure.

BETON : C30/37 (B37)
STAL: Rb500W lub B500SP EPSTAL
Otulina 3,5 cm

TEMAT:	MAJAZELEUM MARTYROLOGII WSI POLSKICH WRAZ Z ZAGOSPODAROWANIEM TERENU
LOKALIZACJA:	MICHNIÓW
INWESTOR:	DZIAŁKI NR EW. 287.288.289.300.301.302

MUZEUM WSI KIELECKIEJ
UL. JANA PAWŁA II 6
25-025 KIELCE

The diagram shows a circular structure on the left, which is a cross-section of a building facade. It features a central vertical axis and a horizontal axis, with a small arrow pointing downwards. To the right of this is a corresponding cross-section of a building facade, showing a series of vertical lines representing structural elements. Below the facade cross-section is a horizontal line with labels A, B, C, D, E, F, G, H, I, J, K, and L, indicating specific points or sections along the facade.

[illegible]